



64 Rodsley Avenue, Bensham, Gateshead, Tyne & Wear, NE8 4JY

£750 Per Calendar Month



Key features

- TOP FLOOR FLAT
- THREE DOUBLE BEDROOMS
- FITTED KITCHEN
- MODERN BATHROOM
- RECENTLY RENOVATED
- GAS CENTRAL HEATING
- UPVC DOUBL GLAZING
- CLOSE TO SALTWELL PARK
- GREAT TRANSPORT LINKS
- VIEWING ADVISED

Description

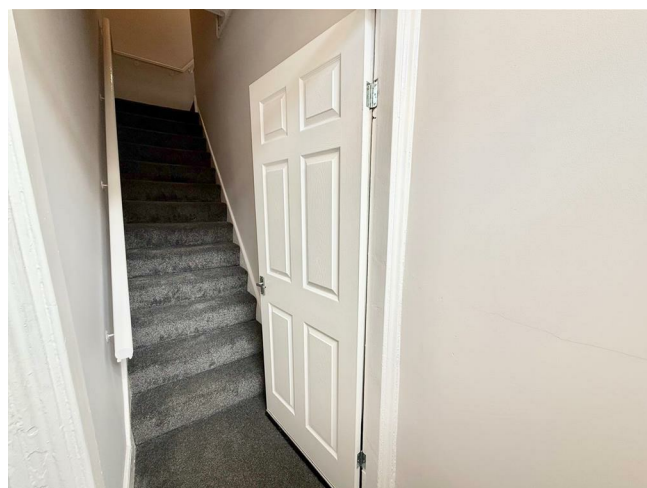
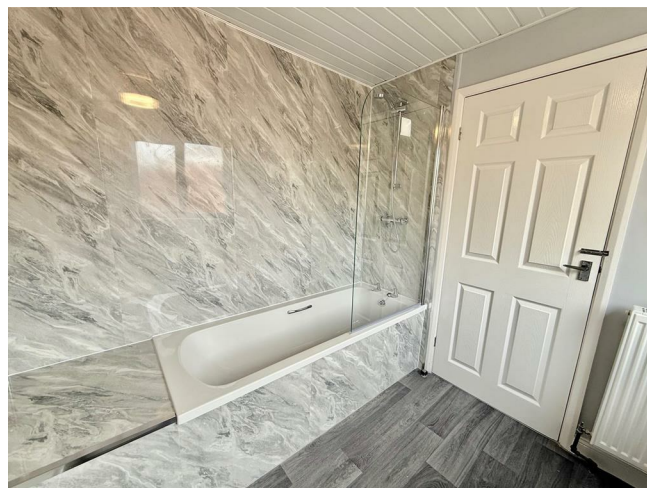
Situated in the charming area of Bensham, Gateshead, this splendid top floor apartment on Rodsley Avenue offers a delightful blend of modern living and convenience. Recently renovated, the flat boasts three generously sized double bedrooms, making it an ideal choice for families or professionals seeking ample space.

The heart of the home is a welcoming reception room, perfect for relaxation or entertaining guests. The well-appointed bathroom complements the living space, ensuring comfort and functionality.

One of the standout features of this property is its proximity to the picturesque Saltwell Park, which is just a short stroll away. This beautiful park provides a perfect setting for leisurely walks, picnics, and outdoor activities, enhancing the appeal of the location.

Additionally, the flat benefits from excellent transport links, making commuting to nearby areas both easy and efficient. Whether you are heading to the bustling city centre or exploring the surrounding regions, you will find that accessibility is a key advantage of this property.

In summary, this recently renovated top floor apartment on Rodsley Avenue is a fantastic opportunity for those seeking a modern, spacious home in a vibrant community. With its three double bedrooms, inviting reception room, and close proximity to both Saltwell Park and transport links, this property is sure to attract interest from a variety of potential renters. Don't miss the chance to make this lovely flat your new home.



ENTRANCE HALL

STAIRWAY/LANDING

LOUNGE

14'11 x 12'7

KITCHEN

11'6 x 7'5

BEDROOM ONE

17'11 x 12'7

BEDROOM TWO

11'1 x 8'4

BEDROOM THREE

9'11 x 8'3

BATHROOM

8'1 x 7'3







EXTERNAL

DISCLAIMER - LETTINGS

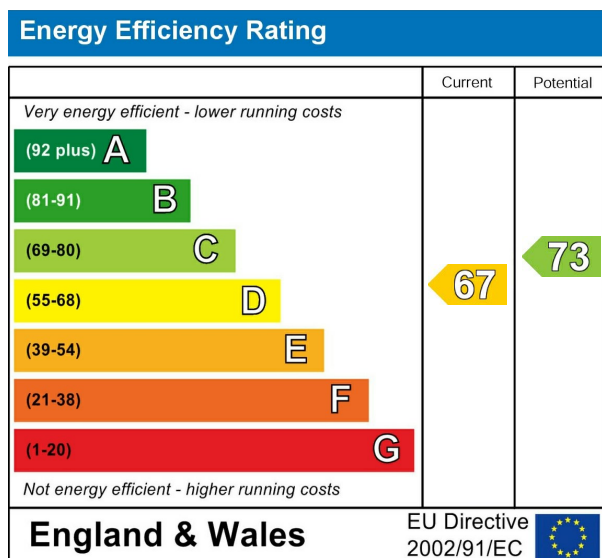
WE REQUIRE

One months rent in advance = £750.00

One months rent as a damage deposit = £750.00

To hold this property from other viewings while references are carried out we require one weeks rent as a holding deposit.

The particulars on these properties are set out as a general guidance for intended for tenants contracts The Agent has not tested any apparatus, equipment, fixtures and fittings or services and so cannot verify that they are in working order or fit for the purpose. Tenants should not rely on them as statements of fact, but must satisfy themselves by inspection or otherwise as to the correctness of each of them. Items shown in photographs are NOT included unless specifically mentioned within the particulars. Measurements have been taken using a laser distance meter and may be subject to a margin of error. For further information see the Consumer Protection from Unfair Trading.



212 High Street
Gateshead
Tyne And Wear
NE8 1AQ
0191 500 8 500
info@carouselestateagents.com
<https://www.carouselestateagents.com>

