



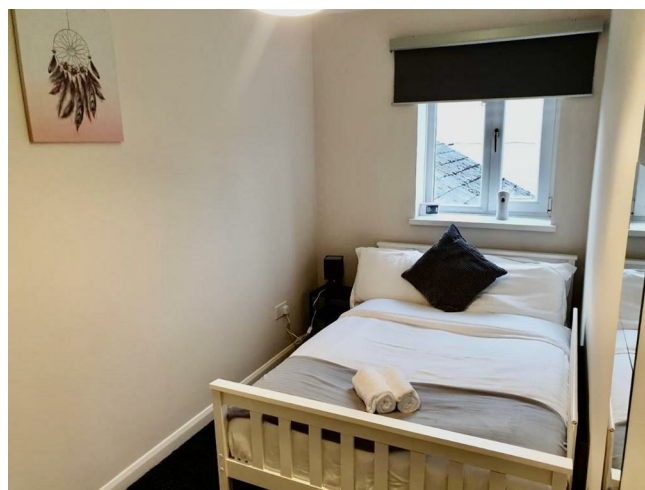
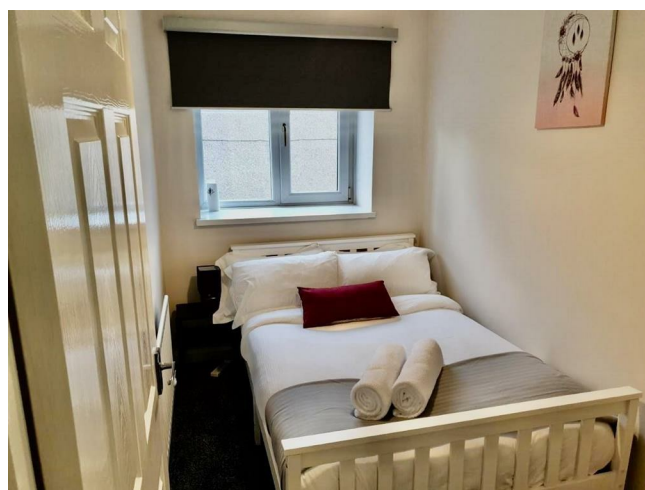
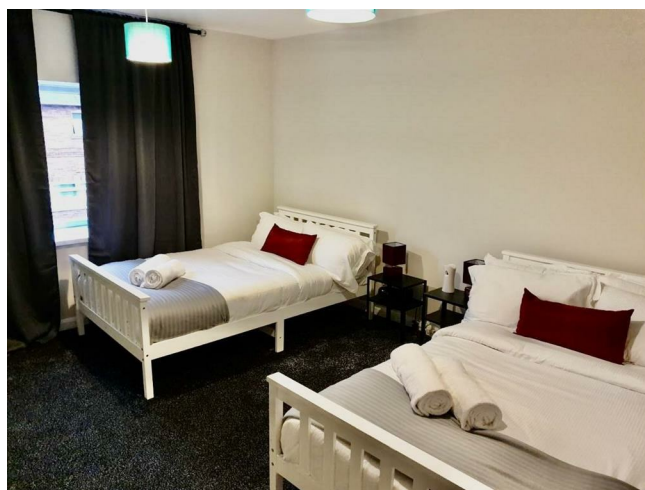
31 Front Street, Grange Villa, Chester Le Street, Co Durham, DH2 3LJ

Offers Over £75,000



Key features

- END TERRACED HOUSE
- THREE BEDROOMS
- FITTED KITCHEN
- MODERN BATHROOM
- GAS CENTRAL HEATING
- UPVC DOUBLE GLAZING
- GREAT TRANSPORT LINKS
- CLOSE TO LOCAL AMENITIES
- NO ONWARD CHAIN
- VIEWING ADVISED



Description

Located on Front Street in the charming area of Grange Villa, Chester Le Street, this delightful end terrace house presents an excellent opportunity for both first-time buyers and families alike. Boasting three well-proportioned bedrooms, this property offers ample space for comfortable living.

Upon entering, you are welcomed into a cosy reception room, perfect for relaxation or entertaining guests. The heart of the home is the inviting kitchen dining area, which provides a wonderful space for family meals and gatherings. The layout is practical and functional, making it easy to enjoy everyday life.

The property features a well-appointed bathroom, ensuring convenience for all residents. With no onward chain, this home is ready for you to move in without delay, allowing for a smooth transition into your new abode.

Situated close to local amenities, you will find shops, schools, and parks within easy reach, making this location ideal for those who appreciate the convenience of nearby facilities. The surrounding area is known for its friendly community atmosphere, providing a welcoming environment for families and individuals alike.

In summary, this end terrace house on Front Street is a fantastic opportunity to secure a lovely home in a desirable location. With its three bedrooms, inviting living spaces, and proximity to local amenities, it is sure to appeal to a wide range of buyers. Do not miss the chance to make this property your own.

ENTRANCE HALL

LOUNGE

KITCHEN/DINING

BEDROOM ONE

BEDROOM TWO

BEDROOM THREE

BATHROOM

EXTERNAL

DISCLAIMER SALES

The particulars on these properties are set out as a general guidance for intended purchasers or tenants, and do not constitute part of an offer or contract. The Agent has not tested any apparatus, equipment, fixtures and fittings or services and so cannot verify that they are in working order or fit for the purpose. A Buyer is advised

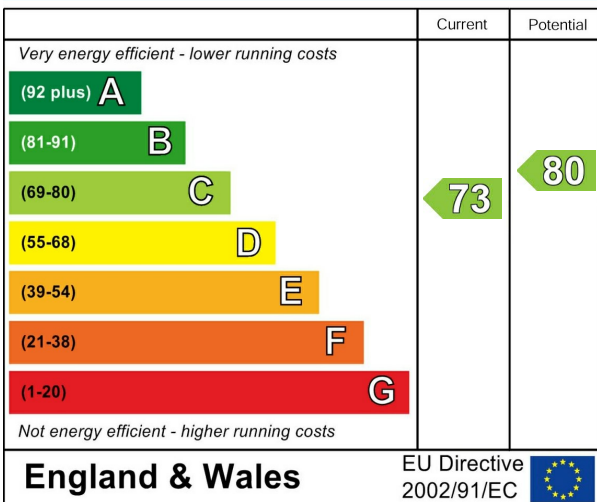






to obtain verification from their Solicitor or Surveyor. References to the Tenure of a Property are based on information supplied by the Seller. The Agent has not had sight of the title documents. A Buyer is advised to obtain verification from their Solicitor. All dimensions, descriptions and distances, reference to condition and necessary permissions for use and occupation, and other details are given without responsibility. Any intending purchasers or tenants should not rely on them as statements of fact, but must satisfy themselves by inspection or otherwise as to the correctness of each of them. Items shown in photographs are NOT included unless specifically mentioned within the sales particulars. They may however be available by separate negotiation. Measurements have been taken using a laser distance meter and may be subject to a margin of error. For further information see the Consumer Protection from Unfair Trading Regulations.

Energy Efficiency Rating



Environmental Impact (CO₂) Rating



212 High Street
 Gateshead
 Tyne And Wear
 NE8 1AQ
 0191 500 8 500
 info@carouselestateagents.com
<https://www.carouselestateagents.com>

