

90 Long Lane, Halesowen, B62 9DJ



90 Long Lane, Halesowen



Hicks Hadley

13 Hagley Road
Halesowen
West Midlands
B63 4PU

 0121 585 66 67

 sales@hickshadley.com

 <https://www.hickshadley.com>

****IDEAL FIRST TIME PURCHASE** **SUPERB INVESTMENT OPPORTUNITY****

Hicks Hadley welcome to the market this two bedroom terraced home located perfectly for amenities and easy access to transport links. This property offers two spacious double bedrooms, A large kitchen dining space and lounge. The property further benefits being within the catchment for great schooling. **EARLY VIEWING RECOMMENDED.**

Offers Over £170,000 - Freehold

Hicks Hadley



Lounge 27'1" x 10'8" (8.26m x 3.25m)
 Glazed window fitted to the front elevation,
 Composite front door fitted with glazed panel
 above, Gas fire place fitted, Under stairs
 cupboard space.

Kitchen/Diner 16'3" x 7'7" (4.95m x 2.31m)
 Glazed window fitted to the rear elevation,
 Partially tiled walls, Ample unit space available,
 Appliance space fore tall fridge/freezer, washing
 machine and dryer, Oven with ceramic hob
 above fitted.

Ground floor family bathroom
 Fitted with bath tub, sink and low flush W.C,
 partially tiled walls, Storage space fitted.

Landing
 Loft access above which we have been advised
 is boards also.

Bedroom one 11'2" x 10'8" (3.40m x 3.25m)
 Glazed window fitted to the front elevation, with
 shelving and cupboard space fitted.

**Bedroom two 12'0" x 7'8"max (3.66m x
 2.34mmax)**
 Glazed window fitted to the rear elevation.

External
 To the rear of the property sits a slabbed area
 and turf with mature planting around borders.
 To the far end of the garden sits a shed base.

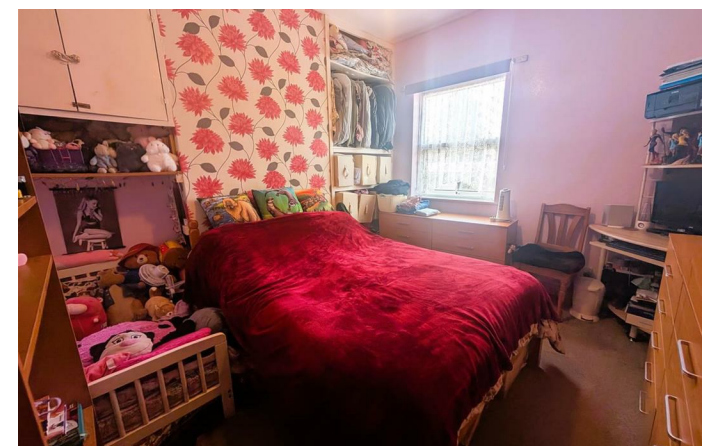
Agent notes
 All main services are connected . (Gas/ Electric
 / Water)

Broadband/Mobile coverage- please check on
 link -//checker.ofcom.org.uk/en-gb/broadband-
 coverage

Council Tax Band :B

EPC :TBC

Tenure Information :FREEHOLD



Any other Material Facts :Traditional brick and block
 build, Please note this property does not have central
 heating system fitted. All information has been provided
 by the vendor, please confirm details with a chosen
 solicitor.

